



# CR / CRV Intensive Mixer

High efficiency and high quality, low maintenance



Mixing, granulation, reaction, emulsification, dispersion, separation, plasticizing, forming, exhaust, crushing, fibrosis, decomposition, coalescence.



Tel: 0086-152 5327 7366

[Http://www.conelemixer.com](http://www.conelemixer.com)

E-mail: [mix@co-nele.com](mailto:mix@co-nele.com)

# Company Profile

Qingdao CO-NELE Machinery Co.,Ltd is one of the national science & technology innovating enterprises located in Qingdao, a beautiful coastal city. The company is the most professional one and ranks in the top of the mixing equipments manufacturers with its products applied widely. Basing on the advanced European technology, We keep close eye to the state of the art and we know well about competitors and ourselves. We pay great attention to product research and development, and till now have gained over 80 national patents. CO-NELE provides high quality products throughout the country and also exports to more than 80 countries and regions from Europe, America, Asia, Africa and Australasia.

1. Planetary mixer has the first domestic market share.
2. The first company who got CE certificate in the same industry in China.
3. Obtained ISO9001, ISO14001, ISO45001 system certification.
4. Intellectual Property Management System Certification.
5. A-level unit of Mixing Machine Research Institute.



# Product Introduction

## CR/ CD Intensive mixer

Unique mixing principle of the CR series Intensive mixers ensure constant, reproducible product quality with minimal mixing times for batch operations.

While the mixing device is rotating at high speed, the drum is driven by the reducer to rotate, and the mixing drum is tilted.

It is inclined at a certain angle to realize a three-dimensional stirring mode, so that the material is turned more violently and the mixing is more uniform. The mixing direction is divided into forward and reverse.



## CR/ CEL series Intensive mixer

CEL series Intensive mixer sizes from 1 to 10 liters are available.

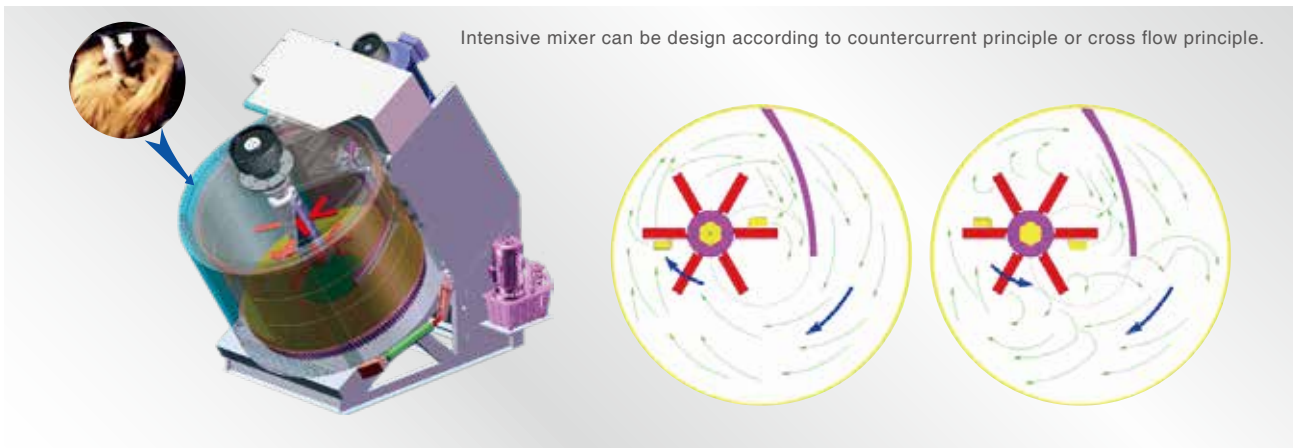
CR series Intensive mixer sizes from 5 to 50 liters are available.

Flexible high-performance mixing system for challenging tasks in the fields of research, development and small-scale production.

The multi-functional mixing system can be used for many different applications, e.g. for mixing, granulating, coating, kneading, dispersing, dissolving, defibering and many more.



# Lead to the future mixing



## Intensive mixer can guarantee the following three points

The mixer can drive the trough move together. At the same time, the mixing device can cut material. In the complex mixing , can get very good mixing effect.

In the turning mixing trough, material be pushed the scraper. Then turn over.

That promote the mixing up and down.

Mixing blade can strip the material at the bottom and side of mixer.

Can shorten the discharging time.

## Technical data

Type	Out capacity(L)	Output weight(Kg)	Main planet(nr)	Paddle(nr)	Batch
CEL5	5	6	1	1	■
CEL10	10	12	1	1	■
CR02	5	6	1	1	■
CR04	10	12	1	1	■
CR05	25	30	1	1	■
CR08	50	60	1	1	■
CR09	100	120	1	1	■
CRV09	150	180	1	1	■
CR11	250	300	1	1	■
CR15	350	420	1	1	■
CRV15	500	600	1	1	■
CRV15H	600	720	1	1	■
CR19	750	900	1	1	■
CRV19	1000	1200	1	1	■
CR20	1250	1500	1	1	■
CR24	1500	1800	1	1	■
CRV24	2000	2400	1	1	■



# Mechanical Features

## 1 Gearing system

It can be selected for different demand of power, revolutions, direction of rotation and energy transfer mode according to the task.

Friction gear or ring gear driven mixing drum.

The motor drive the gearbox by vee belt

Then the gearbox drive the mixing device.



## 2 Mixing device

While the material rotating with the mixing drum, a force generated between the mixing drum and the mixing device that is rotating the same direction in the centrifugal position. The wolfram carbide compounded liner ensures a durable quality and an easy maintaining.

The shape and quantity of the mixing blade depends on the material to mix. The blades are also easy to replace.

### The advantages

The mixer mixes without demixing effects;  
100 % material circulation during one rotation of the mixing pan

Optimal mixing effects are achieved with only one mixing tool

Various consistencies can be processed in the mixer

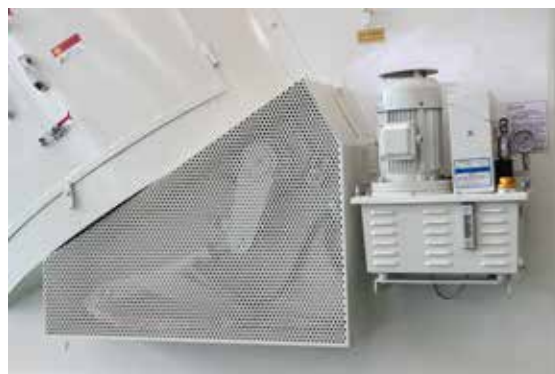
High mixing quality are reached even with short processing times

n Industrial scale-up of test results is possible



### 3 Discharging device

Special sealing device is applied to the discharging gate to prevent from leaking.



### 4 Maintaining door

On the consideration of personnel safety and to the market demand.

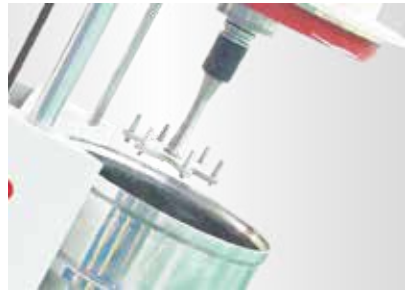
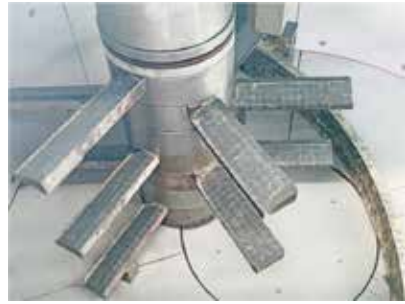
We adopt reliable high-sensitive security switches to be equipped on the maintaining door.

There is an observing port on the maintaining door, observing is possible without cutting off the power.



# Wear-resistance liner/blade

Because the mixed material is abrasive to the structural parts it comes into contact with, the choice of materials for these structural parts must be targeted, and CO-NELE provides a reliable choice for wear-resistant materials.



Security lock



High pressure washing



Temperature check

High-quality steel as structural material

Vulcanized rubber lining and specialty plastics

PTFE, Viton and other sealing materials

Carbide coating

Carbide cladding

High-grade alloy steel

non-ferrous metals

Ceramic material

# Applications

## Ceramics

CO-NELE Intensive mixer can be used to mixing ,homogenize, granulate, plasticize, suspend, cool or heat as well for reactions – and all this in a single machine.

Molding compounds, molecular strainers, proppants, varistor compounds, dental compounds, cutting ceramics, grinding agents, oxide ceramics, Non-oxide ceramics, composite materials, silicate technical ceramics, grinding balls, ferrites, etc.

## Refractory

CO-NELE has been the leading supplier of cutting-edge technologies for the preparation of refractory compounds.

Shaped products,Unshaped products,Prefabricated parts,Mixtures and granules for oxide and non-oxide ceramic materials,Mixtures for ceramic fiber materials

## Concrete

Porous media of bricks, expanded clay, perlite, etc., refractory ceramsite, clay ceramsite, shale ceramsite, ceramsite filter material, ceramsite brick, ceramsite concrete, etc.

## Glass

Glass powder, carbon, lead glass mixtures,waste glass slag etc.

## Metallurgy

When processing raw materials for the production of green pellets, ultrafine ores are mixedwith binding agents (e.g., bentonite) and aggregates (e.g., limestone or dolomite).Zinc and lead ore, aluminum oxide, silicon carbide, iron ore, etc.

## Chemistry

Lime hydrate, dolomite, phosphate fertilizer, peat fertilizer, mineral compounds, sugar beet seeds,etc.

## Environmental technology

Fly ash, slag, dust, sludge, cement filter dust, fly ash, slurries, dusts, lead oxide,Phosphogypsum etc.

## Lithium battery material, flux, friction material, bentonite bonded sand





# Projects





